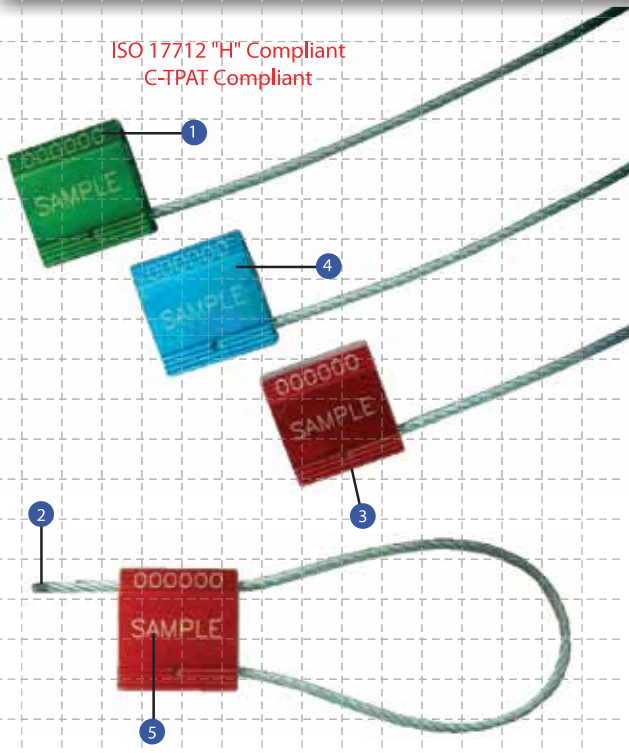


Cable Lock 350

PREVENTION. PROTECTION. PEACE OF MIND.

High Security Seal

ISO 17712 "H" Compliant
C-TPAT Compliant



Strong, Pull-tight Barrier Seal

1. Parts of the exterior have been designed with a rib pattern, which protects the markings during rough handling.
2. The one-way locking mechanism provides fast and easy sealing.
3. One end of the cable is permanently secured into the locking body.
4. This cable lock is anodised in solid colours, which accommodate customised laser marking. Anodising also makes colour coding possible and eases identification from a distance.
5. This cable lock is etched with permanent laser marking for name, logo, sequential numbers & barcode. Laser marking offers the highest level of security as it cannot be removed or replaced.

Specifications

Product	Material	Cable Length	Cable Diameter	Pull Strength	Marking Area	Max Marking Digits	
MCL 350	Aluminium body with galvanized steel wire rope	200mm (Std) <i>* customized lengths available</i>	Ø 3.5 mm	1,200kg	Body: 30mm x 30mm	15	
Standard Colours blue, black, gold, green & red							
INNER CARTON				OUTER CARTON			
Quantity	Dimensions	Weight kg/carton	Volume m ³ /carton	Quantity	Dimensions	Weight kg/carton	Volume m ³ /carton
200 pcs	300mm x 280mm x 170mm	11.2	0.01428	5400 pcs	930mm x 860mm x 340mm	205.26	0.27193

Durable, Pull-tight Cable Seal

The MCL 350 is very user-friendly and highly tamper evident. It is available with different cable lengths to secure various applications with different security requirements.

The cable lock is secured as soon as the wire has passed through the one-way locking mechanism. The wire must be adjusted to fit tightly to the application to maximize security and to prevent tampering.

This cable lock is widely used on trucks, tanker trucks, air cargo containers, shipping containers, rail cars, calibrators and valves.



Be assured of better security with our innovative use of materials and industrial design.

Transport Security, Inc.

TransportSecurity.com

952-442-5625