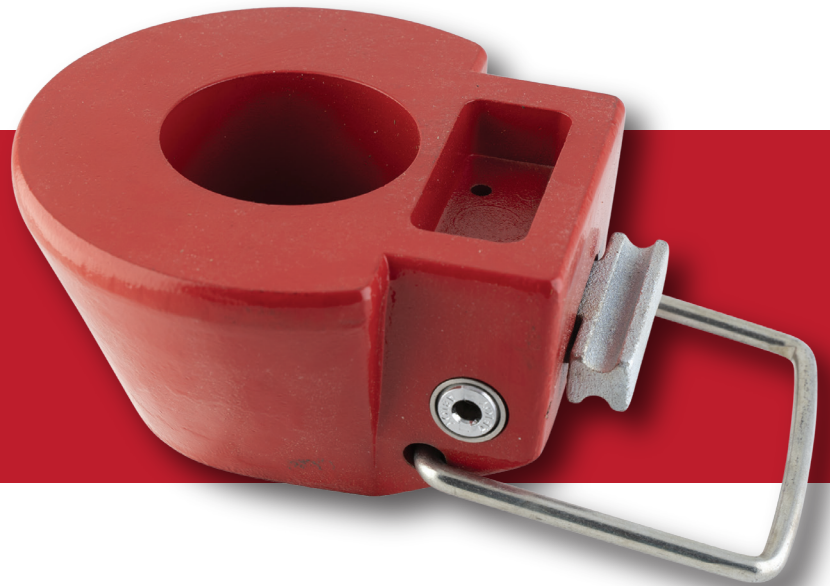


THE  
**ENFORCER**<sup>®</sup>  
TRANSPORT SECURITY, INC.

**KING PIN LOCK #1112**

**Secures dropped  
truck trailer or  
shipping container.**



**Customized Keying  
Solutions**

Locks can be keyed alike, different or different to a master system. Keys are made of strong nickel silver to provide smooth, reliable operation with lasting durability.

**Heavy Duty Cylinders**

ABLOY lock cylinders utilize rotating discs instead of the traditional springs and pins. Cylinder keyway face spins freely to prevent drill bits from penetrating the lock.

**Multiple Locks. One Key.**

Master keying systems can be applied across various types of locks. For example, your padlock, King Pin and Adjustable Trailer Locks can all be keyed alike.\* One key opens all of your locks.

**Conical King Pin Lock for Trailers and  
Containers**

ENFORCER<sup>®</sup> King Pin Lock #1112 is portable and easy to install. It covers and locks the king pin to prevent unauthorized trailer hook ups. This conical-shaped lock is made out of cast aluminum alloy. The enclosed design captures grease for a clean installation. An ABLOY<sup>®</sup> high security lock cylinder is integrated into the lock. ABLOY lock cylinders are designed with rotating discs, like the tumblers in a bank safe, instead of the traditional springs and pins.



\*If you are interested in possibly adding Air Cuff Locks to a master system in the future, we need to be notified before system is created.

820 South Pine Street  
Waconia, Minnesota 55387

(800) 328 - 3442  
(952) 442 - 5625

**TransportSecurity.com**  
enforcer@transportsecurity.com